

DRAWING NUMBER
25-245

DRAWING NUMBER

DRAWING NUMBER

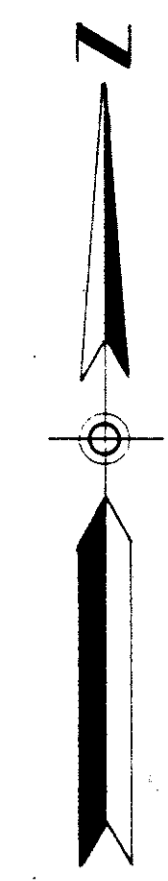
DRAWING NUMBER

PLAT NO. 1 FOREST HILL VILLAGE

IN SECTION II, TWP. 44 S., RGE. 42 E. PALM BEACH COUNTY, FLORIDA

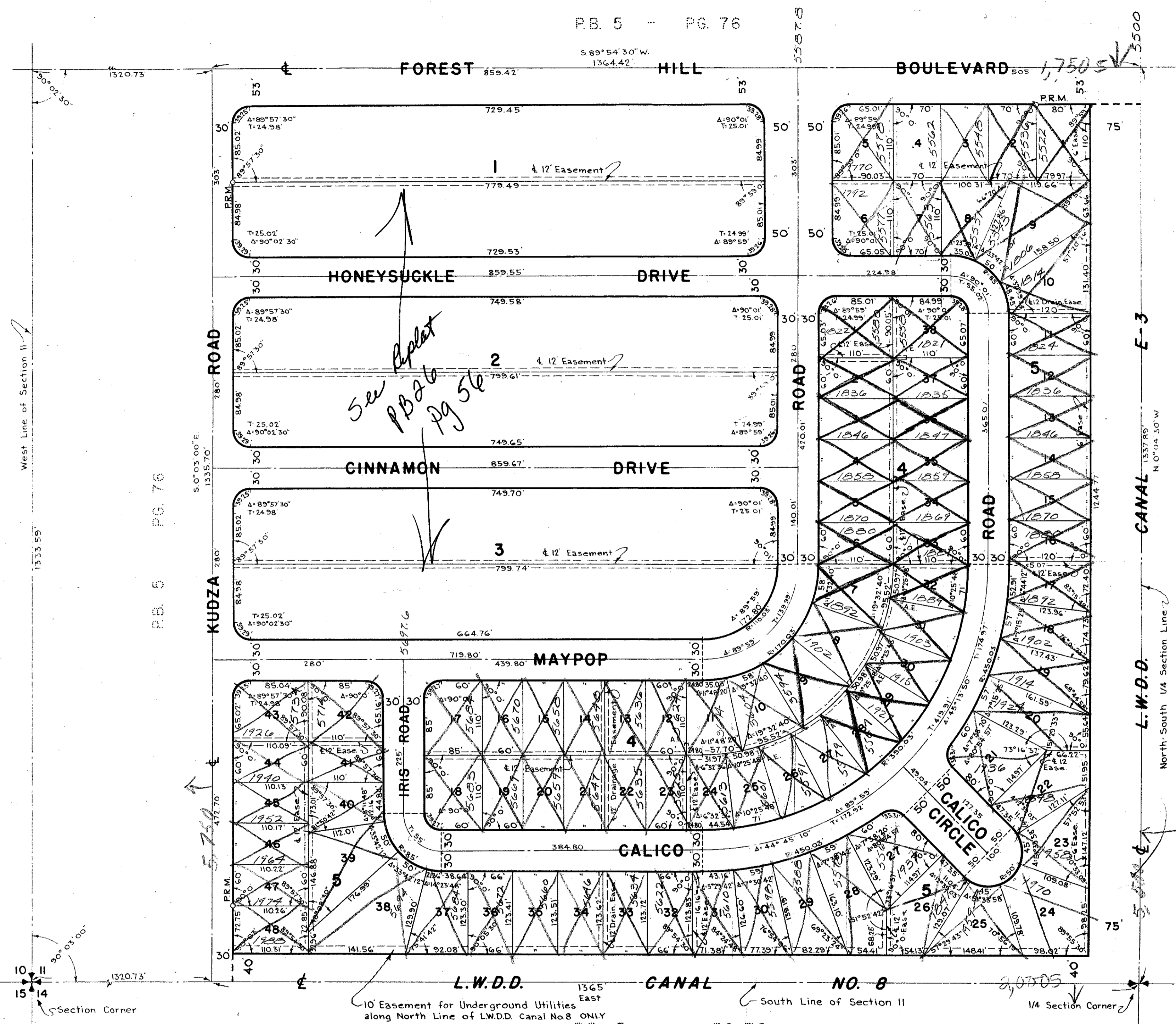
Being a Part of Tracts 13 to 16, inclusive, Model Land Co. Subdivision, recorded in Plat Book 5, Page 76, Public Records of Palm Beach County, Florida.

245



STATE OF FLORIDA
COUNTY OF PALM BEACH
This Plat was filed for record on 10th day of NOV, 1958, and duly recorded in Plat Book No. 25 on page 245.
J. V. L. ARNETTE, Clerk Circuit Court
By: Bertie M. ...

P.B. 5 - PG. 76



STATE OF FLORIDA
COUNTY OF PALM BEACH ^{SS}

KNOW ALL MEN BY THESE PRESENTS, that FOREST HILL VILLAGE, INC., a Florida Corporation, the owners of the tract of land lying and being in Section II, Township 44 South, Range 42 East, Palm Beach County, Florida, shown hereon as PLAT NO. 1, FOREST HILL VILLAGE and more particularly described as follows, to wit:

Beginning at the Quarter Section Corner in the south line of said Section II; thence N. 0° 04' 30" W. along the North-South Quarter Section line of said Section II, a distance of 1337.89 feet, more or less, to a point in the center line of Forest-Hill Boulevard as said center line is shown on the plat recorded in Road-Plat Book 2, Page 148, Public Records of Palm Beach County, Florida (for convenience the south line of said Section II is assumed to bear East-West and all other bearings referred to herein are relative thereto); thence S. 89° 54' 30" W. along said center line of Forest Hill Boulevard, a distance of 1364.42 feet; thence S. 0° 03' 00" E., a distance of 1335.70 feet, more or less, to a point in the South line of said Section II; thence East along said south line of Section II, a distance of 1365 feet, more or less, to the point of beginning. SUBJECT to existing right of ways of record.

The above described property includes Tracts 13, 14, 15 and 16 of the Model Land Co. Subdivision of the West Half (W 1/2) of said Section II, recorded in Plat Book 5, Page 76, Public Records of Palm Beach County, Florida.

has caused the same to be surveyed and platted as shown hereon and does hereby dedicate to the perpetual use of the public, as public highways and waterways, the Streets and Canals shown hereon, and the use of the Easements for the construction and maintenance of Public Utilities.

IN WITNESS WHEREOF, the said Corporation has caused these presents to be signed by its President and attested by its Secretary and its corporate seal to be affixed hereto, by and with the authority of its Board of Directors, this 3rd day of November, A.D. 1958.

FOREST HILL VILLAGE, INC.

Attest: Stephen Abramson Secretary By: [Signature] President

STATE OF FLORIDA
COUNTY OF PALM BEACH ^{SS}

I HEREBY CERTIFY that on this day personally appeared before me, an officer duly authorized to administer oaths and take acknowledgments, E.J. ROSSODIVITA and STEPHEN ABRAMSON, President and Secretary, respectively, of FOREST HILL VILLAGE, INC., a Florida Corporation, to me well known and known to me to be the individuals described in, and who executed the foregoing dedication, and they acknowledged before me that they executed the same as such officers of said Corporation, by and with the authority of its Board of Directors for the purposes therein expressed and that their act and deed was the act and deed of said Corporation.

WITNESS my hand and official seal at West Palm Beach, County of Palm Beach and State of Florida, this 3rd day of November, A.D. 1958.

[Signature]
Notary Public

My Commission expires: August 7, 1961

STATE OF FLORIDA
COUNTY OF PALM BEACH ^{SS}

I HEREBY CERTIFY that the plat shown hereon is a true and correct representation of a survey, made under my direction, of the above described property, and that said survey is accurate to the best of my knowledge and belief, and that permanent reference monuments (P.R.M.) have been placed as required by law.

[Signature]
Registered Land Surveyor
Florida Certificate No. 1125

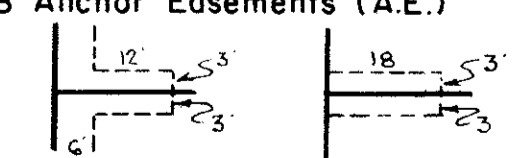
Subscribed and sworn to before me this 31st day of October, A.D. 1958.

[Signature]
Notary Public

My Commission expires: August 7, 1961

NOTE
Building Setback Lines shall be as required by Palm Beach County Zoning Regulations. There shall be no buildings or other structures placed on Utility Easements. There shall be no buildings or any kind of construction, or trees or shrubs placed on Drainage Easements.

NOTE
All Block Corners are rounded with a 25 ft. radius curve, unless otherwise shown. Easements are for Public Utilities, unless otherwise noted. 6' x 18' Anchor Easements (A.E.)



Blocks 1, 2 and 3 are not to be used for residential purposes until replatted at a future date.

Approved: NOVEMBER 10, A.D. 1958
Board of County Commissioners

By: [Signature] Chairman
By: [Signature] County Engineer

1000-395

BROCKWAY, WEBER & BROCKWAY
ENGINEERS, INCORPORATED
WEST PALM BEACH, FLORIDA

PLAT NO. 1
FOREST HILL VILLAGE

11/44/58
J.J.F. SCALE: 1" = 100' Dwg. No.
M.C. DATE: OCTOBER 1958